



BUILDING A BETTER I-4

Stay Informed:

- » Project Hotline: 844-ULT-INFO (858-4636)
- » Sign up for email and text alerts at fdot.tips/I4Alerts
- » Follow @i4Ultimate on Twitter
- » Subscribe to our monthly newsletter at fdot.tips/I4News

COLONIAL DRIVE FROM HUGHEY AVENUE TO ORANGE AVENUE CLOSING WEEKEND OF AUGUST 24

CLOSURE BEGINS AT 10 P.M. ON FRIDAY, AUGUST 24, AND CONCLUDES BY EVENING OF SUNDAY, AUGUST 26

The Florida Department of Transportation is temporarily closing Colonial Drive (State Road 50) from Hughey Avenue to Orange Avenue from 10 p.m. on Friday, August 24, until evening Sunday, August 26. The closure is necessary for construction of the new eastbound I-4 bridge over Colonial Drive. The intersection of Colonial Drive and Garland Avenue also will be closed during this same period. For detour maps to westbound Interstate 4 (I-4) on-ramp from Colonial Drive and eastbound I-4 on-ramp from Garland Avenue see reverse side of the handout. The eastbound I-4 on-ramp near the intersection of Garland Avenue and Amelia Street will remain open during this closure.

Traveling westbound on Colonial Drive:

- Turn left onto Orange Avenue
- Turn right onto Amelia Street
- Turn right onto Parramore Avenue

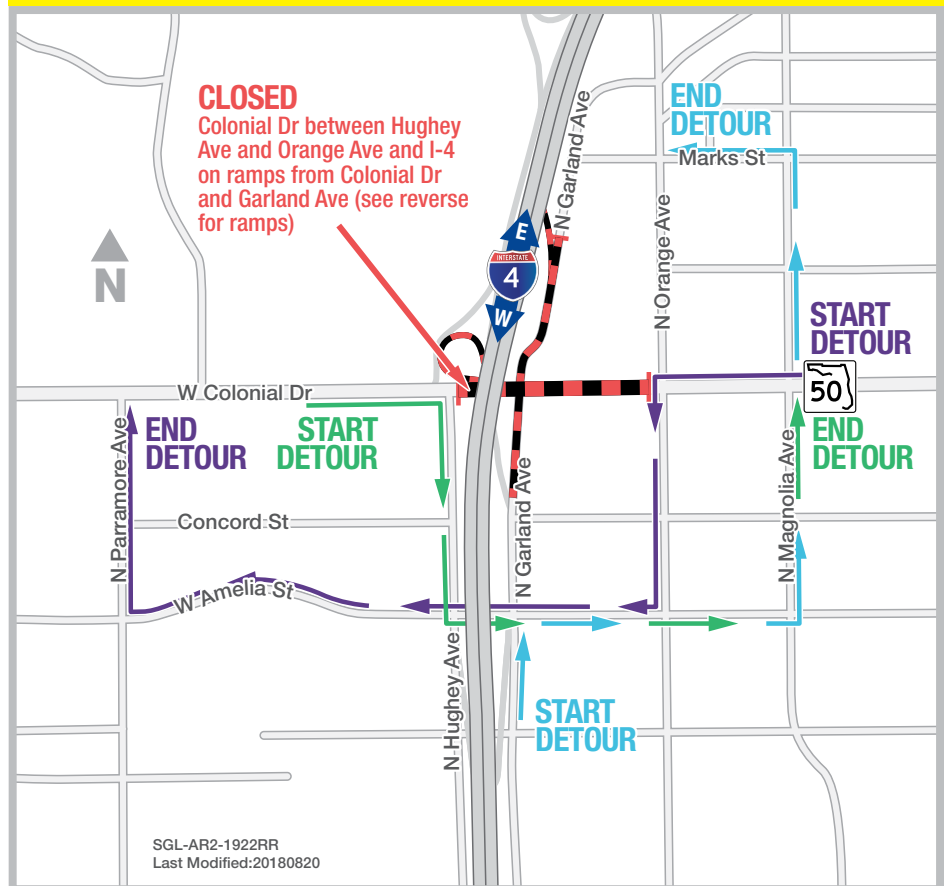
Traveling eastbound on Colonial Drive:

- Turn right onto Hughey Avenue
- Turn left onto Amelia Street
- Turn left onto Magnolia Avenue

Traveling northbound on Garland Avenue:

- Turn right onto Amelia Street
- Turn left onto Magnolia Avenue
- Turn left onto Marks Street

Access to businesses and residences between Orange Avenue and Garland Avenue will be maintained during the closure.



PROJECT INFO

The \$2.3 billion I-4 Ultimate project is reconstructing 21 miles of interstate from west of Kirkman Road to east of State Road 434 in Longwood. For more information about I-4 Ultimate, contact David Parks, I-4 Ultimate Public Information Officer, at 844-ULT-INFO (844-858-4636) or DavidParks@i4Ultimate.com.

Closure subject to change. Construction progress, roadway conditions and weather may require schedule adjustments. Please check i4ultimate.com/alertsmap for the most up-to-date information.



Sign up for I-4 Construction Updates and Alerts at I4Ultimate.com
Learn about commuter options in Central Florida at reThinkYourCommute.com





BUILDING A BETTER I-4

Stay Informed:

- » Project Hotline: 844-ULT-INFO (858-4636)
- » Sign up for email and text alerts at fdot.tips/I4Alerts
- » Follow @i4Ultimate on Twitter
- » Subscribe to our monthly newsletter at fdot.tips/I4News

WESTBOUND I-4 ON-RAMP FROM WESTBOUND COLONIAL DRIVE AND EASTBOUND I-4 ON-RAMP FROM GARLAND AVENUE CLOSING WEEKEND OF AUGUST 24

CLOSURE BEGINS AT 10 P.M. ON FRIDAY, AUGUST 24, AND CONCLUDES BY EVENING OF SUNDAY, AUGUST 26

The Florida Department of Transportation is temporarily closing Colonial Drive (State Road 50) from Hughey Avenue to Orange Avenue from 10 p.m. on Friday, August 24, until evening Sunday, August 26. The closure is necessary for construction of the new eastbound I-4 bridge over Colonial Drive.

The westbound Interstate 4 (I-4) on-ramp from Colonial Drive and eastbound I-4 on-ramp from Garland Avenue also will be closed during this same period. Detour maps for Colonial Drive closure are on the reverse side of this handout. The eastbound I-4 on-ramp near the intersection of Garland Avenue and Amelia Street will remain open during this closure.

Traveling westbound on Colonial Drive to westbound I-4:

- Turn left onto Orange Avenue
- Turn right onto Amelia Street
- Turn left onto Hughey Avenue
- Follow signs to westbound I-4 on-ramp

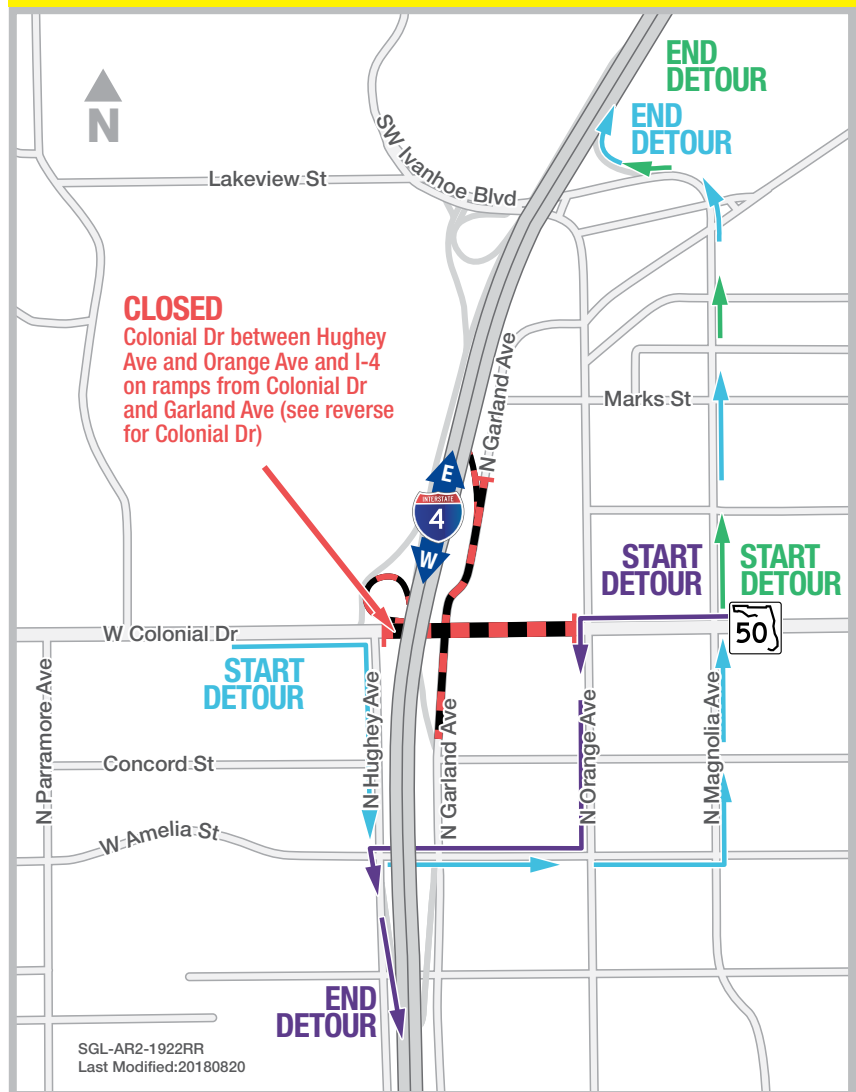
Traveling westbound on Colonial Drive to eastbound I-4:

- Turn right onto Magnolia Avenue
- Follow signs to eastbound I-4 on-ramp

Traveling eastbound on Colonial Drive to eastbound I-4:

- Turn right onto Hughey Avenue
- Turn left onto Amelia Street
- Turn left onto Magnolia Avenue
- Follow signs to eastbound I-4 on-ramp

Access to businesses and residences between Orange Avenue and Garland Avenue will be maintained during the closure.



Closure subject to change. Construction progress, roadway conditions and weather may require schedule adjustments.

Please check i4ultimate.com/alertsmap for the most up-to-date information.



Sign up for I-4 Construction Updates and Alerts at I4Ultimate.com
Learn about commuter options in Central Florida at reThinkYourCommute.com

